

76°9'30"E

76°10'0"E

After

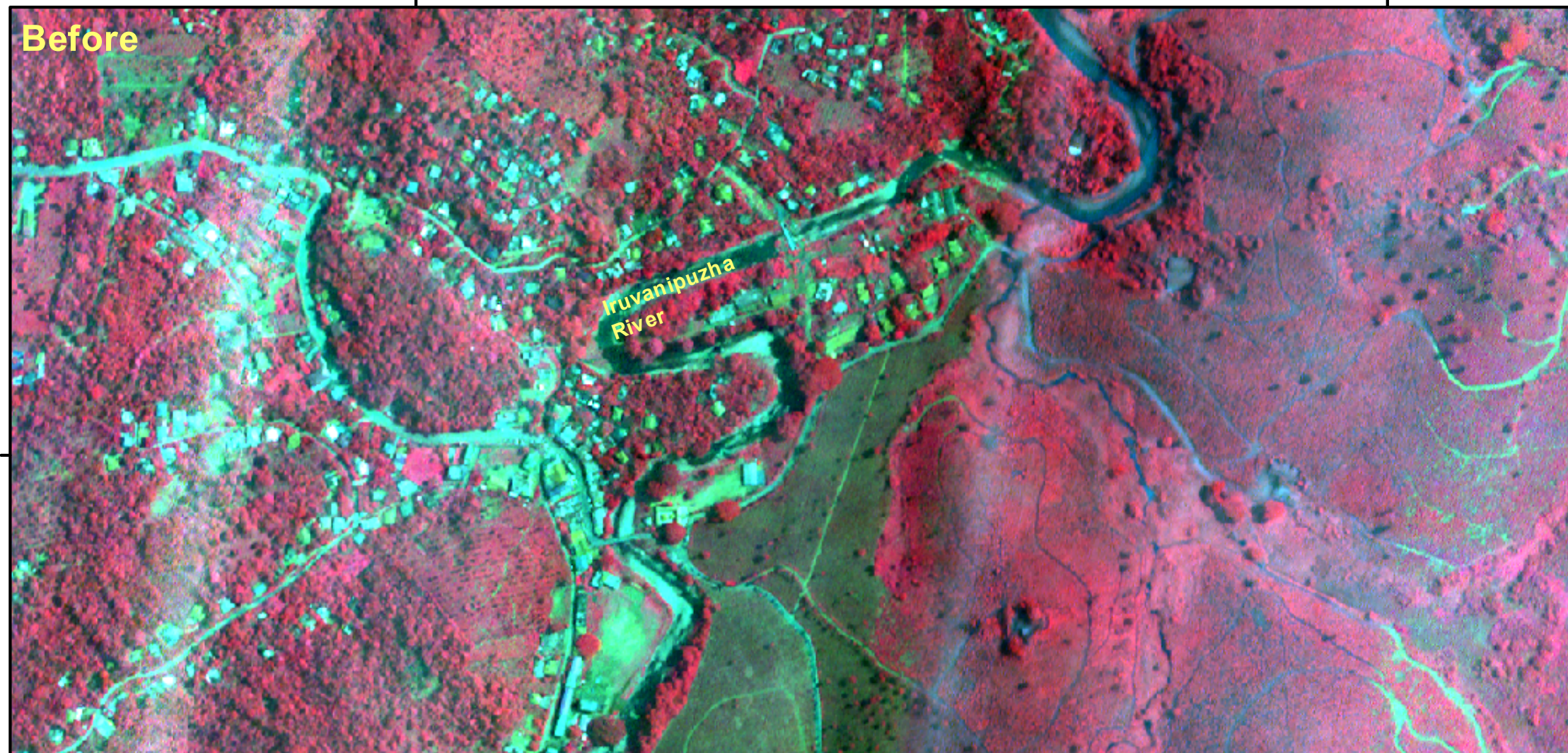


76°9'30"E

76°10'0"E

11°30'0"N

Before



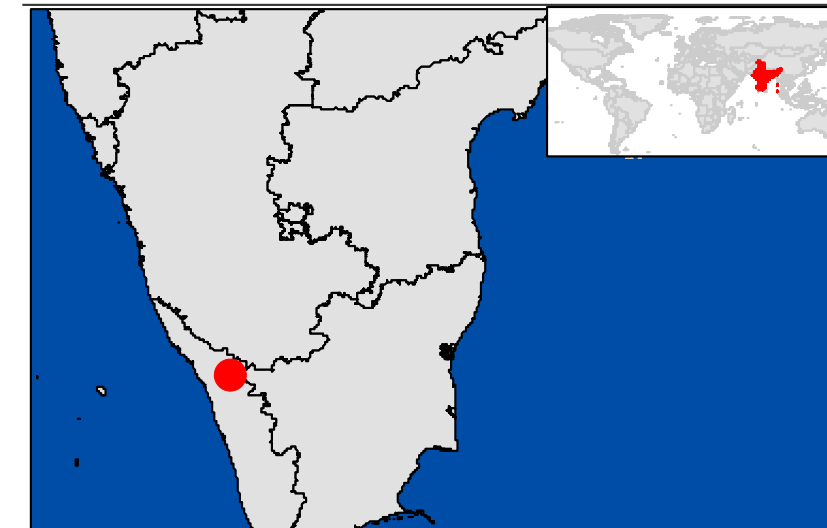
11°30'0"N

Chooralmala, Wayanad, Kerala, India

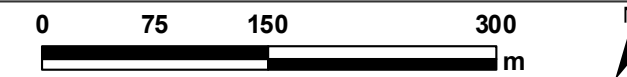
Landslide Impact Map

Observed on 06/07/2024

Location Diagrams



Cartographic Information



Local Projection : WGS 1984 UTM Zone 43N Datum : WGS1984

Geographic projection : Lat / Lon (DMS), Datum:WGS 84

Scale : 1:5,000 for A3 prints

Legend



Interpretation

A major debris flow was triggered by heavy rainfall in and around the Chooralmala town of Wayanad District in Kerala state of India. As per latest reports, more than 300 people are dead and many are missing. Pleiades 1A optical imagery acquired on 6 August, 2024, shows the extent of damage in and around Chooralmala town.

Data Sources

Pre Event Image : Cartosat 3 (Mx) 22 May, 2023

images© NRSC/ISRO

Post Event Image : Pleiades 1A 6 August, 2024 (Partially cloud free) image © CNES (2024), Distribution Airbus DS

Frame Work

The best effort rapid mapping product is elaborated within a very short time frame, optimising the available material, and has been quality checked as per NRSC/ISRO procedures.

All geographic informations has limitations due to scale, resolution, date and interpretation of the original source material. No liability concerning the content or the use thereof is assured by the producer.

Note: When publishing this map as part of any report, source may be indicated as "LANDSLIDE OCCURRED IN CHOORALMALA TOWN, WAYANAD DISTRICT, KERALA, INDIA (30 JULY 2024)" dated 06-08-2024, NRSC/ISRO, Hyderabad.

E-mail: gdgsg@nrsc.gov.in

