








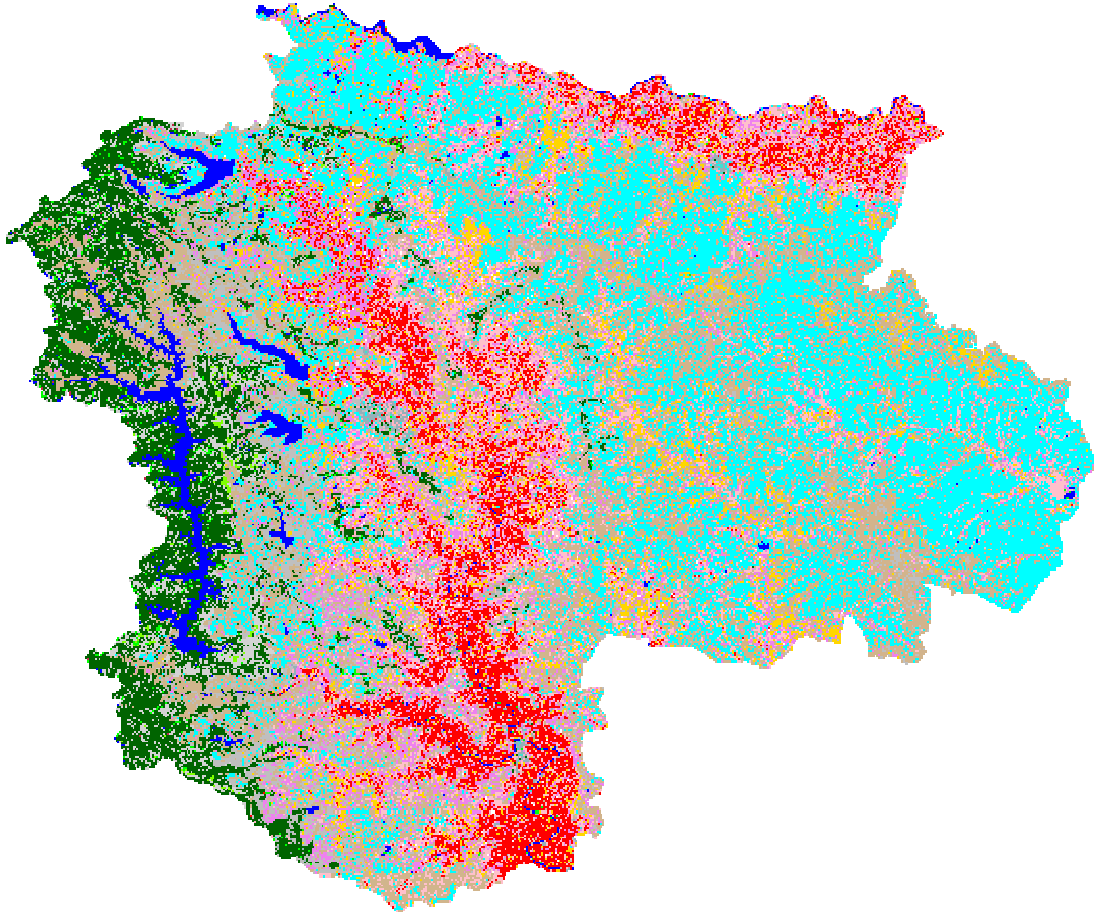


**MEASURING VILLAGE LEVEL SUGARCANE CROP IN SATARA DISTRICT (2012-13),
USING SATELLITE REMOTE SENSING AND GIS TECHNIQUE**

Sr. No.	District	Tahasil	No. of Villages	Area of Village in Ha	Sugarcane by SRS in Ha
1	Satara	Satara	222	90534.93	6776.29
2		Phaltan	119	117368.16	12834.27
3		Patan	333	138313.92	2452.8
4		Koregaon	125	91941.04	9311.79
5		Karad	213	103259.9	29660.8
6		Jaoli	220	85585.29	742.01
7		Wai	126	61147.78	4019.7
8		Khandala	68	52074.71	1437.24
9		Mahabaleshwar	58	22835.02	0
10		Man	105	148961.8	39.23
11		Khatav	135	135291.35	318.12
Total			1724	1047256.9	67592.25

LEGEND

-  Barren
-  Fallow
-  Crop 1
-  Sugarcane
-  Other crop
-  Vegetation
-  Scrub
-  Forest
-  water



Classified Image of Sugarcane crop mapping of Satara district