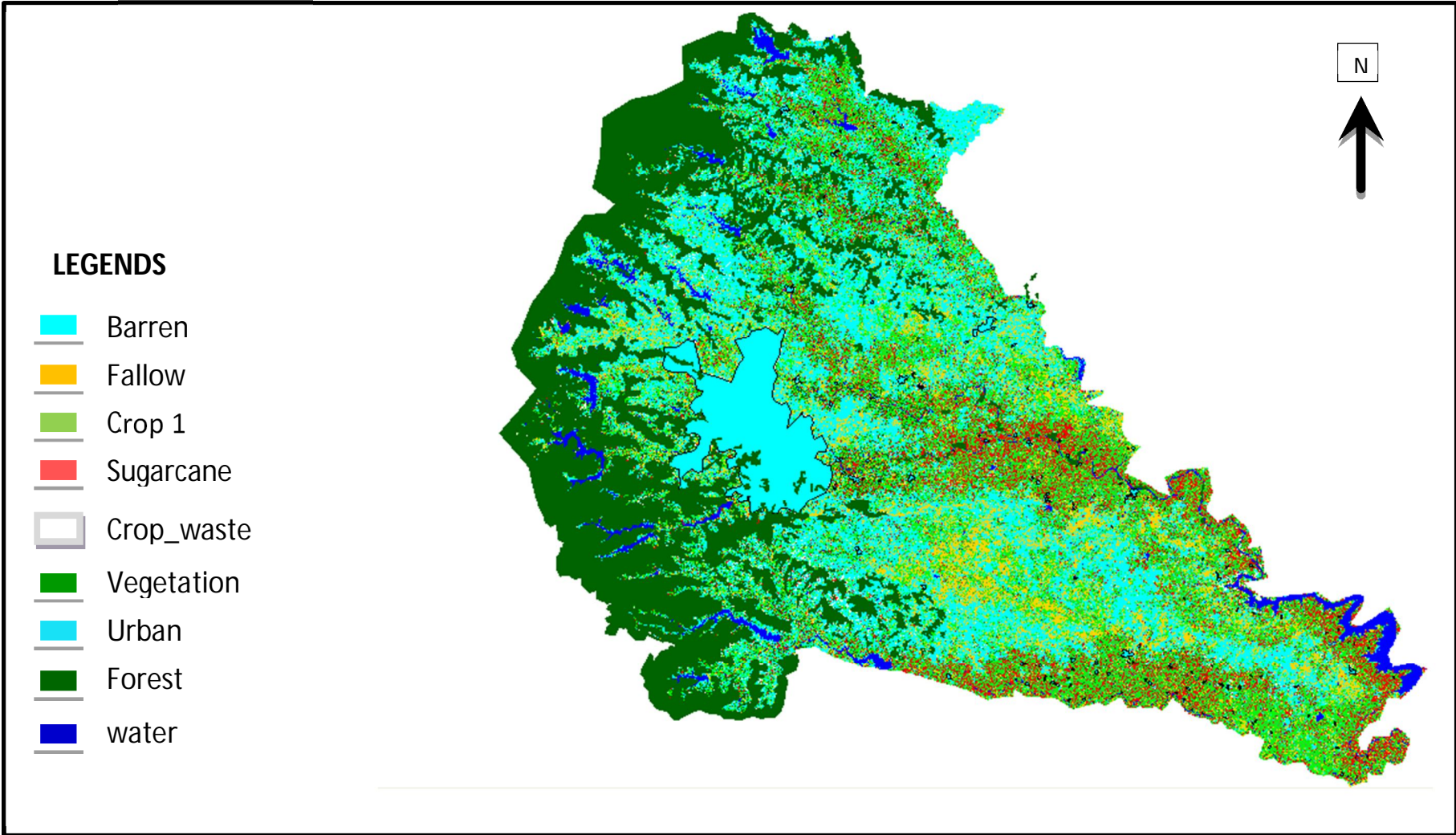


**MEASURING VILLAGE LEVEL SUGARCANE CROP IN  
PUNE DISTRICT (2012-13), USING SATELLITE  
REMOTE SENSING AND GIS TECHNIQUE**

<b>Sr. No</b>	<b>District</b>	<b>Tahsil</b>	<b>No. of Villages</b>	<b>Area of villages in Ha</b>	<b>Sugarcane by SRS in Ha</b>
1	Pune	Ambegaon	139	104559.2	3679.7
2		Baramati	117	138300.3	13148.3
3		Bhor	194	90216.1	2242.8
4		Daund	102	129416.5	21610.9
5 &6		Haveli & Pune city	165	142389.3	5899.4
7		Indapur	142	146987.4	22612.1
8		Junnar	181	137555.9	7207.8
9		Khed	186	136385.1	4368.8
10		Mawal	195	113971	1614.9
11		Mulshi	153	103372.7	1003
12		Purander	109	110025.8	3588.1
13		Shirur	102	154946.7	12659.9
14		Velhe	130	54867	608.8
			<b>Total</b>	<b>1915</b>	<b>1562993</b>



Classified land use land cover Image of Pune district