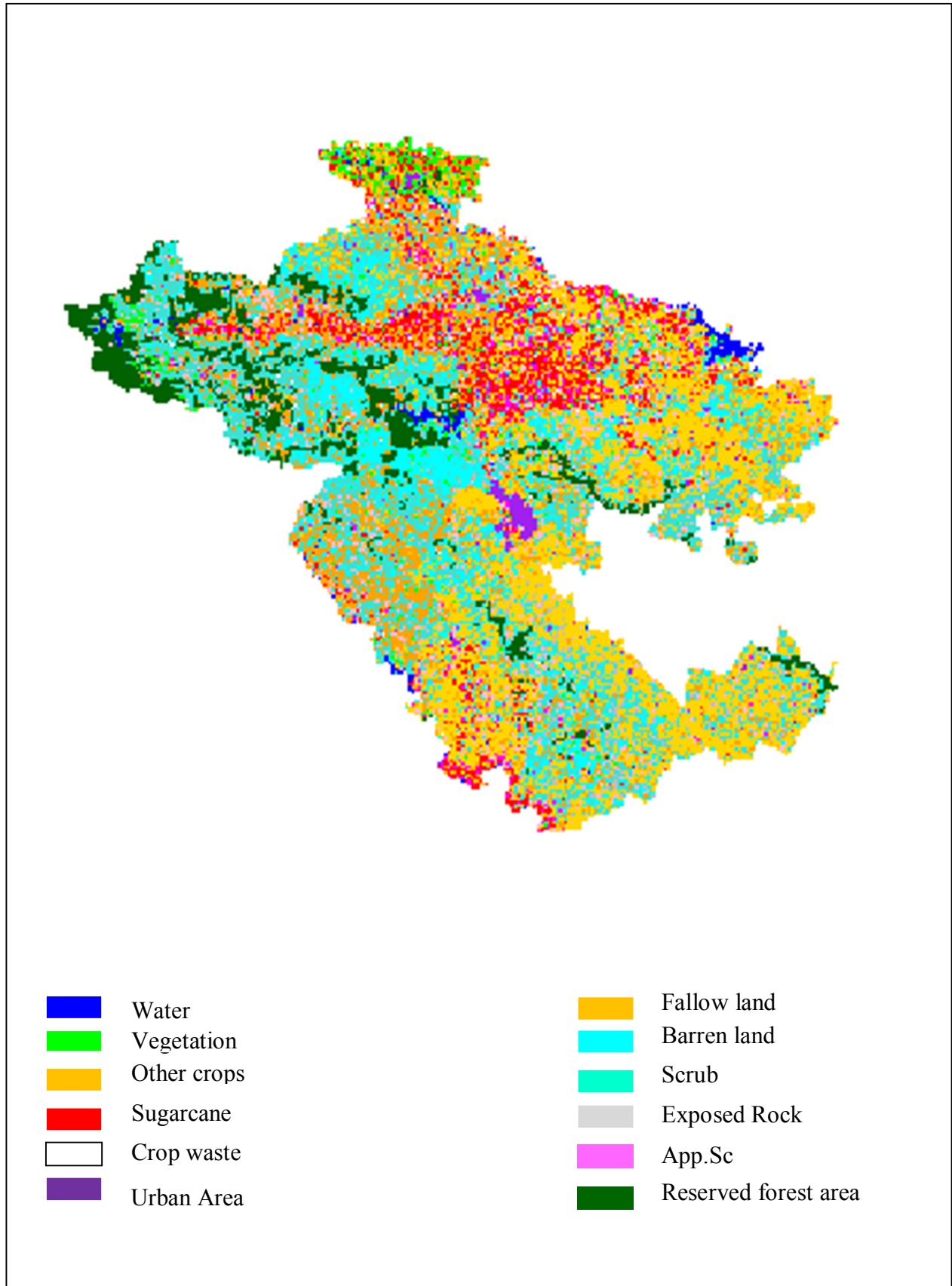


**MEASURING VILLAGE LEVEL SUGARCANE CROP IN  
AHMEDNAGAR DISTRICT (2012-13), USING SATELLITE  
REMOTE SENSING AND GIS TECHNIQUE**

<b>Sr. No.</b>	<b>District</b>	<b>Tahasil</b>	<b>No. of Villages</b>	<b>Area of Village in Ha</b>	<b>Sugarcane by SRS in Ha</b>
	Ahmednagar				
1		Akole	190	149766.66	3452.78
2		Jamkhed	89	87709.90	379.07
3		karjat	118	148528.53	3037.82
4		Kopargaon	78	72793.62	9988.24
5		Nagar	145	152007.10	855.71
6		Newasa	124	129215.07	25639.26
7		Parner	131	186277.77	2747.58
8		pathardi	139	119163.76	1655.02
9		Rahata	63	65447.54	8873.28
10		Rahuri	107	102003.59	19153.38
11		Sangmner	181	168797.85	8761.71
12		Shevgaon	115	108983.64	4658.05
13		Shrigonda	113	160840.07	9236.91
14		Shrirampur	57	56462.78	10058.74
		<b>Total</b>	<b>1650</b>	<b>1707997.89</b>	<b>108497.55</b>



**Classified image of Sugarcane crop mapping of Ahmednagar District**